



[www.broward.edu](http://www.broward.edu)

# DUAL ENROLLMENT

Presented By: Odalys Garcia  
Dual Enrollment Coordinator

# WHY CHOOSE BC?

- Founded in 1960, BC is the oldest and largest institution of higher education in Broward County.
- BC is an accredited public institution of higher education (SACS COC).
- The Aspen Institute named BC one of the top ten community colleges in the nation.
- Small class sizes, affordable, accessible





# TYPES OF DEGREES

- Certificates
- Associate in Science (A.S.)
- Associate in Applied Science (A.A.S.)
- Associate in Arts (A.A.)
- Bachelor of Science (B.S.)
- Bachelor of Applied Science (B.A.S.)



# 8 Career Pathways

- **Arts, Humanities, Communication and Design** 
- **Business** 
- **Social, Behavioral & Human Services** 
- **Health Sciences**  
- **Industry, Manufacturing, Construction & Transportation**
- **Public Safety** 
- **Science, Technology, Engineering & Math** 
- **Education** 

# HOW MUCH DOES BC COST?

**\$117.90 per credit (in-state fee rate)**

**\$373.00 per credit (out-of-state fee rate)**

**Each class is about 3  
credits each**

**Full time students take  
30 credits per year**



**It will cost  
approximately  
\$3,480.00 for in-  
state tuition per  
year.**

# HONORS COLLEGE

- Incoming high school students
  - Unweighted HS GPA of 3.5
  - SAT – 1190 (min. 610 EBRW, 570 Math)
  - ACT – 22 (min. 21 English, 21 Math, 22 Reading)
  - PERT – 113 Reading, 123 Math, 123 Writing
- Currently enrolled BC students
  - College level test scores
  - Earned at least 6 college-level credits
  - 3.5 Overall/Honors GPA



[www.broward.edu/honors](http://www.broward.edu/honors)



# WHAT IS DUAL ENROLLMENT?

Dual enrollment is an accelerated program that allows secondary students to take post secondary coursework and simultaneously earn both high school and college credits, saving both time and money.



# ELIGIBILITY REQUIREMENTS

## Initial Eligibility

- Minimum unweighted HS GPA of 3.0
- College level test scores in English, Reading and Math
  - Achieved through the ACT, SAT or PERT
- Permission from parent, school counselor and principal

## Continued Eligibility

- Earn a grade of "C" or higher in each course
- Maintain unweighted HS GPA of 3.0
- Complete DE Recommendation Form each term



# PLACEMENT TESTING

Test Type	English	Reading	Math
SAT (March 1, 2016 or after)	25+ (Writ. & Lang.)	24+ (Reading)	24.0 – 26.4 (MAT1033) 26.5 + (MAC1105)
ACT	17 + (English)	19+ (Reading)	19-20 (MAT1033) 21+ (MAC1105)
PERT	103+ (Writing)	106+ (Reading)	114-122 (MAT1033) 123+ (MAC1105)



# DUAL ENROLLMENT vs. EARLY ADMISSIONS

Dual Enrollment	Early Admissions
Limited credits per term (May not be full time)	Must enroll into a minimum of 12 credits (max 18) (Must be full time)
Can be in any grade in high school	Must be a senior in high school
Not required to enroll in consecutive terms	Must enroll for the Fall and Spring Terms
Take courses at college while still attending high school	Only take BC courses



# DID YOU KNOW?



## Dual Enrollment Courses

- Will transfer to any Florida public college or university
- Count towards the beginning of your college transcripts
- May not be repeated while still enrolled in the dual enrollment program (includes withdrawals)
- Are FREE!! Application and tuition fees are waived

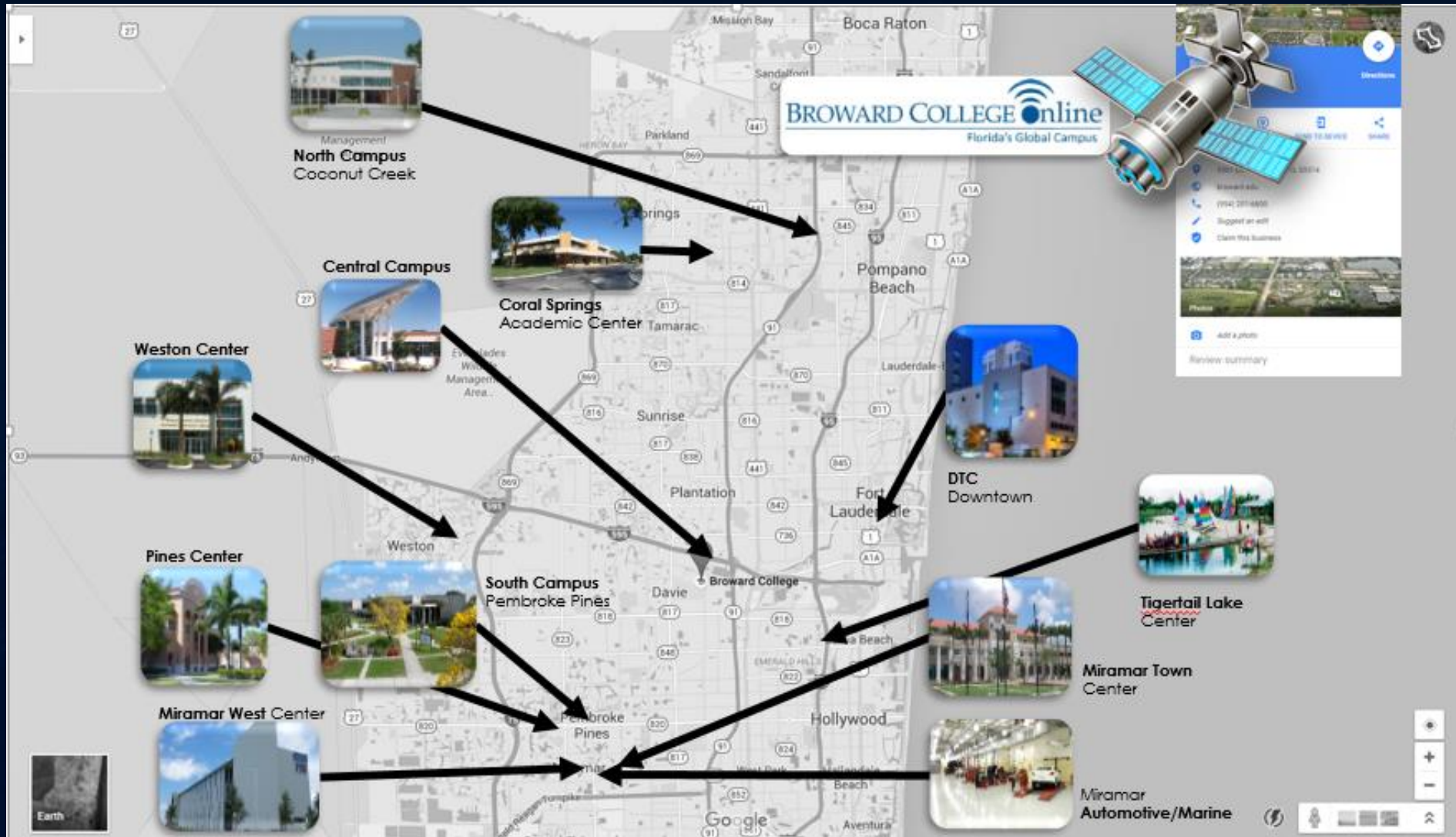
# HOW TO GET STARTED

- ✓ Meet with your school counselor to confirm you meet the eligibility requirements.
- ✓ Apply to BC online at [www.broward.edu](http://www.broward.edu).
- ✓ Take the PERT test (if needed).
- ✓ Work with your school counselor to complete the course selection process.
- ✓ Submit your DE Recommendation Form to your school counselor by the school's **deadline date** each term.

# WHAT CLASSES SHOULD I REGISTER FOR?

- ✓ Review with your counselor what courses you have left to complete for high school graduation.
- ✓ *The most important thing to remember is that graduating from high school is your first priority.*
- ✓ General education courses
- ✓ What do you want your major to be in college?
- ✓ Should not take courses at BC that you are already going to earn credit for from an AP class.

# WHERE CAN I TAKE MY CLASSES?



✓ You are eligible to take courses at any BC location.

✓ There are 4 main campuses and 8 centers.

✓ You can also take courses online.

**BROWARD COLLEGE**<sup>SM</sup>

[www.broward.edu](http://www.broward.edu)

# HOW AND WHEN DO I REGISTER FOR CLASSES?

- ✓ Log into your myBC account beginning the first day of registration.
- ✓ Register for your courses online and bring your schedule back to your counselor.

## Registration Date for Summer Term 2020

**March 9, 2020**

**Classes Begin – May 11, 2020**



# BC Term and Sessions

## ✓ **Fall and Spring Term**

- ✓ Session 1 – 16 weeks
- ✓ Session 2 – First 8 weeks
- ✓ Session 3 – 12 weeks
- ✓ Session 4 – Last 8 weeks

## ✓ **Summer Term**

- ✓ Session 1 – 12 weeks
- ✓ Session 2 – First 6 weeks
- ✓ Session 3 – Last 6 weeks



# DROP/WITHDRAWAL PROCESS

Students drop/withdraw online or at a BC by drop or withdrawal date located on student schedule

- ✓ **Drop Date:** About a week after class begins depending on session
  - ✓ Cancels Course Registration
- ✓ **Withdrawal Date:** Occurs 60% into a session
  - ✓ Last date a student can withdraw without grade penalty
- ✓ **Link to Academic Calendar online:**
  - ✓ <http://www.broward.edu/calendar/Pages/term-dates.aspx>

# DISABILITY SERVICES

- ✓ If you currently receive accommodations at your high school for a disability **AND** you would like those same accommodations here at BC, you must contact the Disability Services Office on a BC Campus.
- ✓ You cannot decide at the end of the term that because you are receiving a failing grade that you now want services.
- ✓ **Best to get the services set up so they can be used at any time.**
- ✓ It is **NOT automatic!** You must self-disclose.
- ✓ Information is kept private.
- ✓ <http://www.broward.edu/studentresources/disability/Pages/default.aspx>



# PARKING AND TEXTBOOKS

## ✓ Parking

- ✓ Order your parking decal online at [www.broward.edu/parking](http://www.broward.edu/parking).
- ✓ Your parking decal will be mailed to you.
- ✓ Any issues, contact campus safety at 954-201-4357.

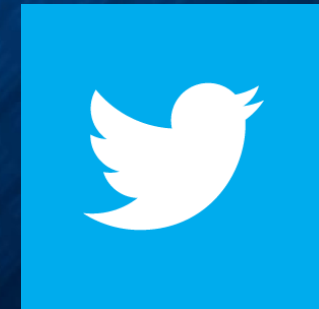


## ✓ Textbooks

- ✓ Go to the bookstore before the term begins to pick up your books. Best time is one week before classes begin.
- ✓ Bring a copy of your schedule and advise them you are a DE student and the high school you attend.
- ✓ Not required to pay for books, access codes, lab coats and goggles, art supplies, etc.

# Connect with Broward College

[www.broward.edu/dual](http://www.broward.edu/dual)



[http://www.facebook.com/  
BrowardCollege](http://www.facebook.com/BrowardCollege)

Twitter: @BrowardCollege

Any questions?